

Konstruktionsbeschreibung

Dachaufbau Erdgeschoss (gegen beheizt)

Table with 2 columns: Material/Detail, Thickness. Includes items like Extensivbegrünung, Kies, Schutzmatte, Wärmedämmung EPS, etc.

Bodenaufbau Erdgeschoss (gegen unbeheizt)

Table with 2 columns: Material/Detail, Thickness. Includes items like Bodenbelag, Unterlagboden, Pe-Folie, Trittschalldämmung, etc.

Bodenaufbau Erdgeschoss (gegen unbeheizt)

Table with 2 columns: Material/Detail, Thickness. Includes items like Bodenbelag, Unterlagboden, Pe-Folie, Trittschalldämmung, etc.

Bodenaufbau Erdgeschoss (gegen unbeheizt)

Table with 2 columns: Material/Detail, Thickness. Includes items like Bodenbelag, Unterlagboden, Pe-Folie, Trittschalldämmung, etc.

Bodenaufbau Keller EG & Abstell OG (gegen unbeheizt)

Table with 2 columns: Material/Detail, Thickness. Includes items like Bodenbelag, Unterlagboden, Stahlbetondecke.

Bodenaufbau Terrasse (gegen beheizt)

Table with 2 columns: Material/Detail, Thickness. Includes items like Platten, Distanzhalter / Kies, Schutzmatte, etc.

Bodenaufbau Gartenhalle (gegen unbeheizt)

Table with 2 columns: Material/Detail, Thickness. Includes items like Platten, Distanzhalter / Kies, Schutzmatte, etc.

Wandaufbau Gartenhalle (gegen Aussen)

Table with 2 columns: Material/Detail, Thickness. Includes items like Stahlbeton, Klebemörtel, Wärmedämmung XPS, Aussenputz.

Wandaufbau Erdgeschoss (innen, gegen unbeheizt)

Table with 2 columns: Material/Detail, Thickness. Includes items like Spritzputz, Haftschicht, Stahlbeton, Klebemörtel, etc.

Wandaufbau 1 Erdgeschoss (innen)

Table with 2 columns: Material/Detail, Thickness. Includes items like Abrieb, Backstein, Abrieb.

Wandaufbau 2 Erdgeschoss (innen)

Table with 2 columns: Material/Detail, Thickness. Includes items like Gipskartonplatte, Ständer ged. mit Steinwolle, Gipskartonplatte.

Materialisierung Boden / Wand / Decke

100 Vorraum

Table with 2 columns: Material/Detail, Thickness. Includes Platten, Abrieb, Spritzputz.

101 Keller EG

Table with 2 columns: Material/Detail, Thickness. Includes Platten, Abrieb, Spritzputz.

102 Keller OG

Table with 2 columns: Material/Detail, Thickness. Includes Platten, Abrieb, Spritzputz.

110 Korridor / Eingang

Table with 2 columns: Material/Detail, Thickness. Includes Parkett, Abrieb, Spritzputz.

111 WA / TRO

Table with 2 columns: Material/Detail, Thickness. Includes Platten, Abrieb, Spritzputz.

112 Dusche / WC

Table with 2 columns: Material/Detail, Thickness. Includes Platten, Abrieb, Spritzputz.

113 Bad

Table with 2 columns: Material/Detail, Thickness. Includes Platten, Abrieb, Spritzputz.

114 Zimmer / Ankleide

Table with 2 columns: Material/Detail, Thickness. Includes Parkett, Abrieb, Spritzputz.

115 Zimmer

Table with 2 columns: Material/Detail, Thickness. Includes Parkett, Abrieb, Spritzputz.

116 Zimmer

Table with 2 columns: Material/Detail, Thickness. Includes Parkett, Abrieb, Spritzputz.

117 Wohnen

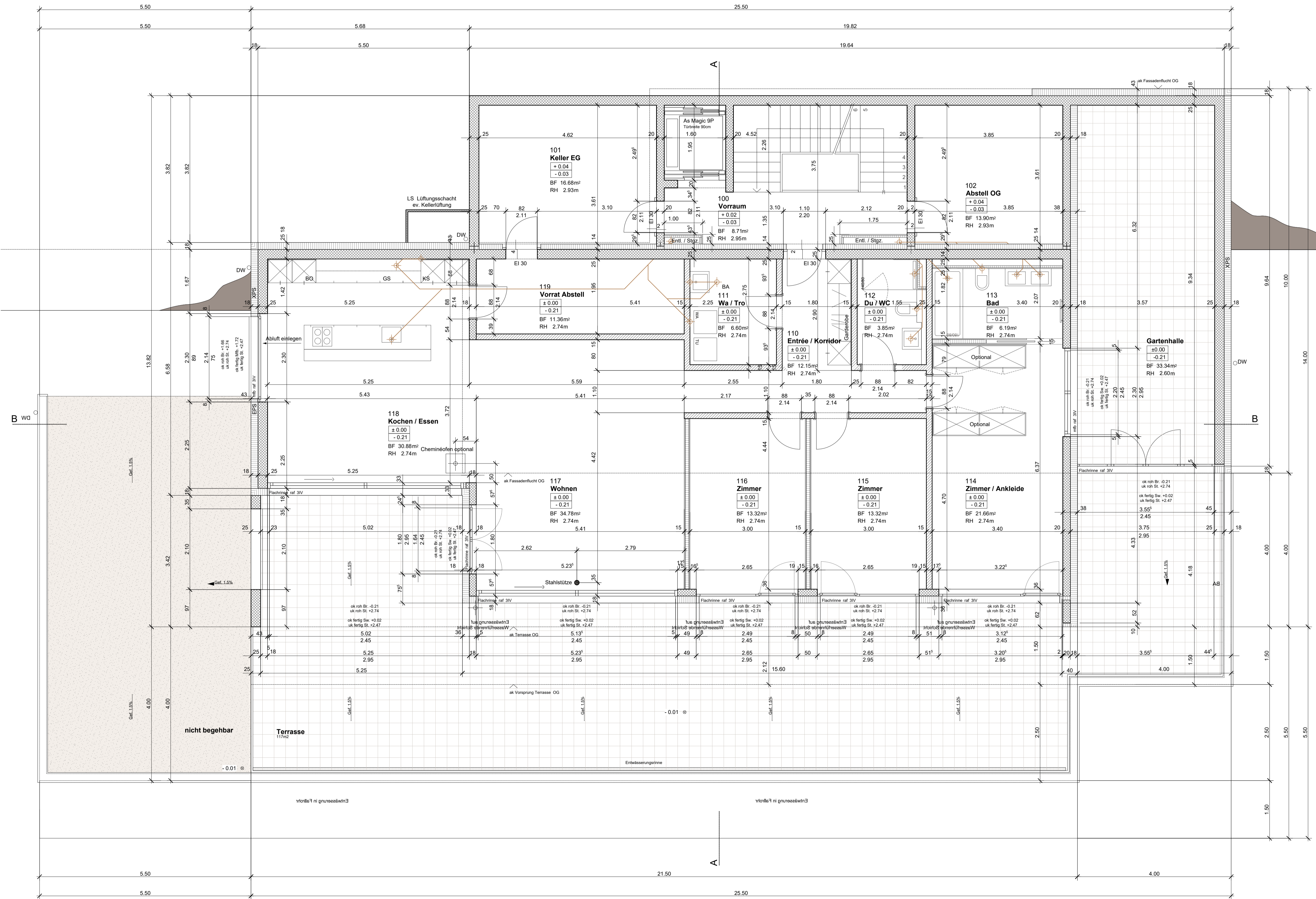
Table with 2 columns: Material/Detail, Thickness. Includes Parkett, Abrieb, Spritzputz.

118 Kochen / Essen

Table with 2 columns: Material/Detail, Thickness. Includes Parkett / Platten, Abrieb, Spritzputz.

119 Vorrat / Abstell

Table with 2 columns: Material/Detail, Thickness. Includes Platten, Abrieb, Spritzputz.

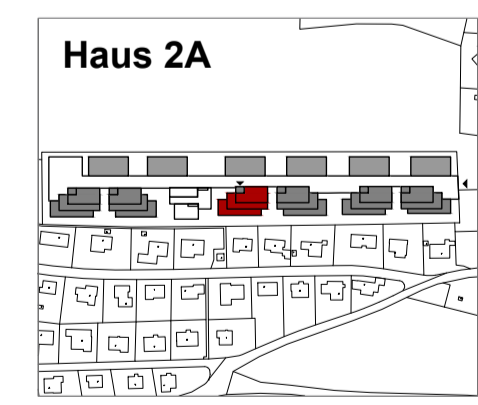


Hinweise / Legende

Alle Masse sind vom Unternehmer am Bau zu prüfen und mögliche Abweichungen der Bauleitung mitzuteilen. Unstimmigkeiten sind in Absprache mit der Bauleitung vor Ort zu klären.

Tables for Kurzzeichen (shorthand symbols for materials and construction types) and Massangaben (mass specifications for floor, stairs, and wall construction).

Table for Baustoffe (materials) listing types like Beton, Backstein, Kalksandstein, etc., and Werkleitungen neu (new conduits) listing types like Sauberwasser, Kanalisation, etc.



Revisions table with columns for Datum (date), Art (type), and Beschreibung (description).

OK EG = ± 0.00 = 671.71 m.o.M.

Project information including Bauherrschaft (client), Bauvorhaben (project name), Baubewilligung (building permit), Grundriss Erdgeschoss Haus 2A (ground floor plan), Mst. 1:50 (scale), and contact information for aneller hungerbühler architektur + baumanagement.